

KWC ONO touch light PRO



one two three TIPS

KWC ONO touch light **PRO**



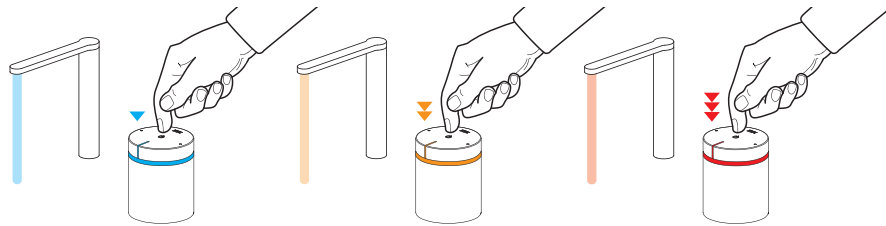
Time to step into the world of tomorrow:
KWC ONO touch light **PRO** is a product concept with a great future. The aesthetics of the streamlined contours are expressed in a minimalist design that characterises the world of KWC ONO. The only thing about it that is even more beautiful is the sophisticated electronics, which open up endless possibilities for the user.

Water that responds to your touch

It feels good. The flow rate and temperature can be controlled by gently tapping the operating unit and programmed entirely to suit your requirements.

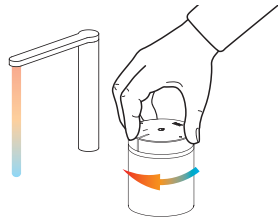
tip'n'flow 1-2-3 (one two three TIPS)

Tap briefly once, twice or three times to call up the default programme.



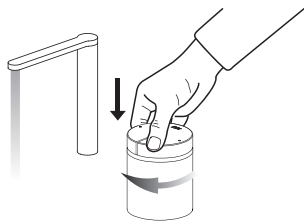
Temperature control

Simply turn to set your preferred temperature.



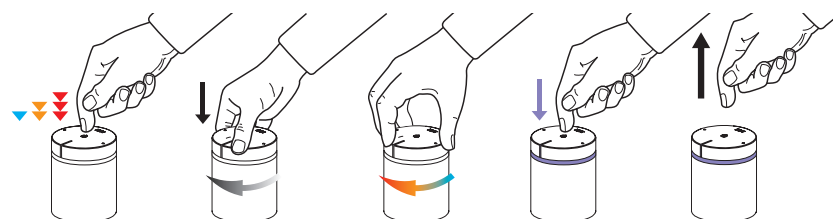
Volume control

Press and turn to control the flow rate as required.



Changing the default programme settings

Select the tip'n'flow 1-2-3 position, then set your preferred flow rate and temperature and release the button. Press the button and hold it down until the light ring shines purple. Release the button to save the settings (indicated by the light flashing twice).





Remote control

The operating unit is also available in a wireless version. A magnet enables you to easily remove it from the top of the swivel spout and place it anywhere you like in the room.

To recharge the remote control battery, all you have to do is place the entire operating unit in the charging device supplied. A fully charged battery provides approximately 40 hours of operating time.



Extended guarantee

KWC is extending its standard guarantee for all faucets from the KWC ONO touch light **PRO** range by an additional two years. To benefit from the extended guarantee, you must register your product at www.kwc.com/garantie_guarantee/. You can go straight to the registration page by scanning the QR code shown here. Further information is available on www.kwc.com or from the Customer Care Centre, Tel. +41 62 768 68 68.



Creative freedom

Every room is different and everyone's tastes are unique. KWC ONO touch light **PRO** takes personal preferences into account with its exceptionally versatile product range. The operating unit can be positioned anywhere, for example – on work surfaces, on the basin or even on the wall.





Comfort in the shower

Comfort and elegance in perfect harmony: whether it is a diverter that switches between a shower head and a hand shower with a simple touch of a button or an integrated thermostat – safety, aesthetics and relaxation go hand in hand.



Everything under control

Filling the bathtub automatically? It is easy to programme the water temperature and flow rate, and KWC ONO touch light **PRO** keeps everything under control while your bathtub is being filled. So you can relax even before enjoying your bath.

Maximum minimalism

Sheer elegance: KWC ONO touch light **PRO** is a masterpiece of minimalism. In a wall model with a concealed unit, all the water-bearing elements are hidden away neatly and invisibly behind the wall. Anything that can still be seen is there purely for aesthetic effect.



'KWC ONO touch light **PRO** is elegant, practical, simple, and innovative – and therefore provides everything that truly distinguishes good design.'





Adding style to your kitchen

The kitchen is not just any old room. This is the place where culinary masterpieces are created and the art of cooking is celebrated, and KWC ONO touch light **PRO** provides both stylish inspiration and practical help.



The highflex® combination

KWC ONO touch light **PRO** with patented highflex® spring hose technology is a particular highlight in any kitchen. Various installation options are possible – from a compact 1-hole solution to 2 or 3-hole versions.

A diverse range

Whether you are looking for a faucet for your kitchen or bathroom, KWC touch light **PRO** is available in various versions to fulfil whatever aesthetic and functional requirements you may have.



